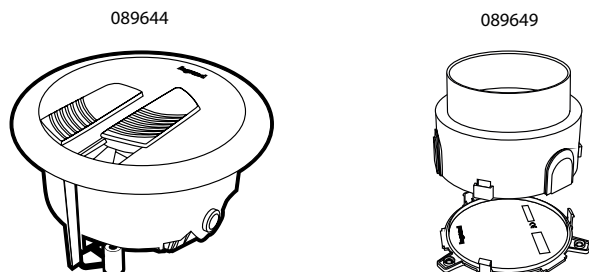


3-module floor box & flush mounting box

Cat. No(s) : 0 896 44/49



CONTENTS

Page

1. Use	1
2. Range	1
3. Installation	1
4. Wiring devices supports	3
5. Technical characteristics	3
6. Material characteristics	3

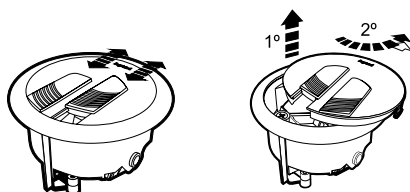
1. USE

For integration into raised floors or concrete screed, the 3 module floor boxes provide power and data supply to various workstations through the floor.

The 3-module flush mounting box can be supplied by ICTA conduits of Ø 20 or 25 mm.

2. RANGE

■ 2.1 3-module floor box cat. no 0896 44



For renovation with low depth raised floors or concrete screed (minimum required height ≥ 80 mm).

To equip with:

- 1 Mosaic 2P+E socket (2 modules)
- 1 RJ45 socket (1 module) Mosaic or Arteor

Includes 2 independent cable exit lids for low voltage and high voltage cables.

Compliant with NF EN 60670 23.

IP20/IK07.

Grey RAL 7031

■ 2.2 3-module flush mounting box cat. no 0896 49



For renovation with low depth raised floors or concrete screed (minimum required height ≥ 80 mm).

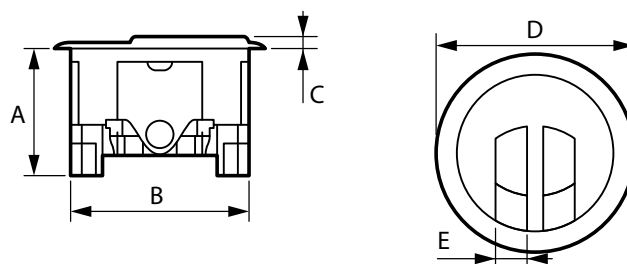
Compliant with NF EN 60670 23.

Grey RAL 7031

3. INSTALLATION

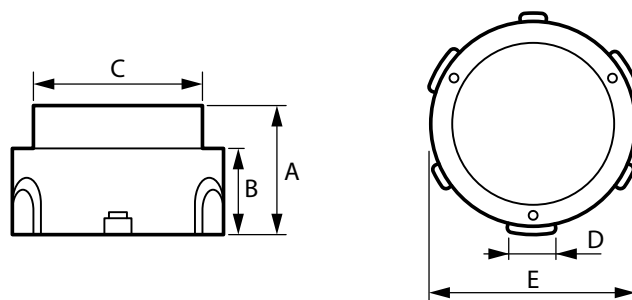
■ 3.1 Floor footprint dimensions for the 3-module floor box cat. no 0896 44 & flush mounting box cat. no 0 896 49

Floor box cat. no 0 896 44



A (mm)	B (mm)	C (mm)	D (mm)	E (mm)
65	85	5.5	110	18

Flush mounting box cat. no 0 896 49



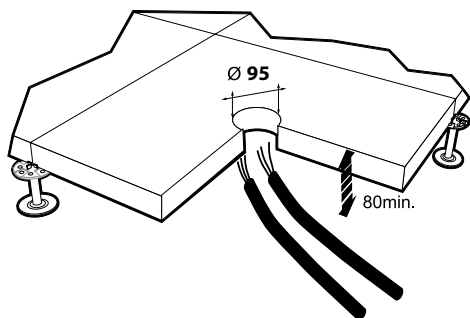
A (mm)	B (mm)	C (mm)	D (mm)	E (mm)
76	51	94	22,5	136

3. INSTALLATION (CONT.)

■ 3.2 3-module floor box cat. no 0896 44 & flush mounting box cat. no 0 896 49 installation

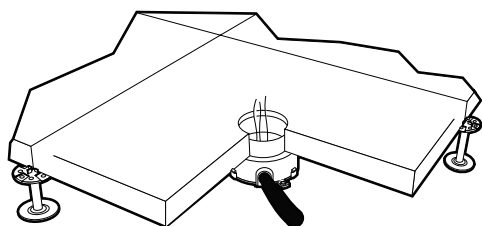
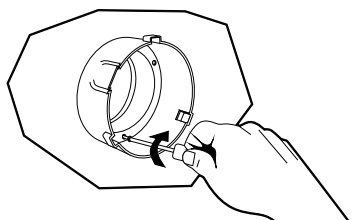
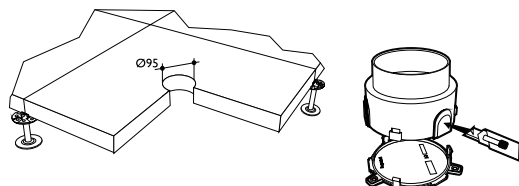
3.2.1 in raised floor with flush mounting box cat. no 0896 49

Minimum installation height: 80 mm
Floor cutout diameter: 95 mm

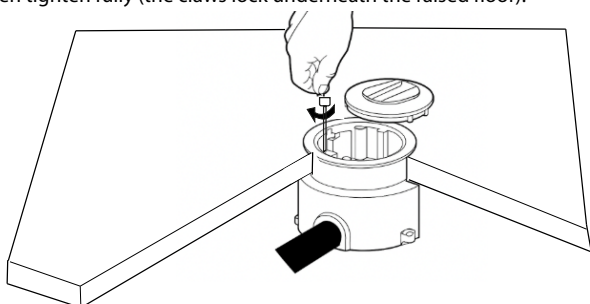


Fixing the flush mounting box in the raised floor:

inside the mounting box, there are three pre-drilled holes for securing it to the raised floor

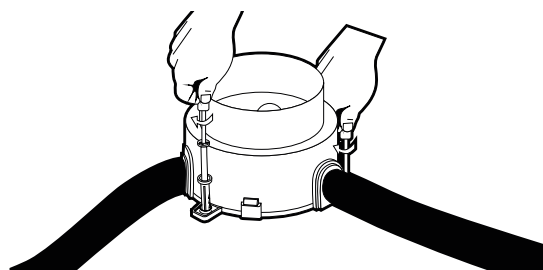
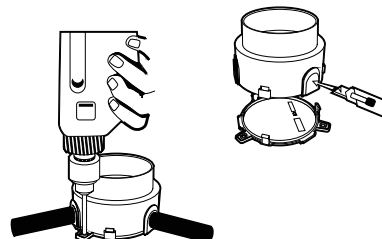


Turn the screws inside the floor box a quarter turn to release the claws, then tighten fully (the claws lock underneath the raised floor).



3.2.2 in concrete screed with flush mounting box cat. no 0896 49

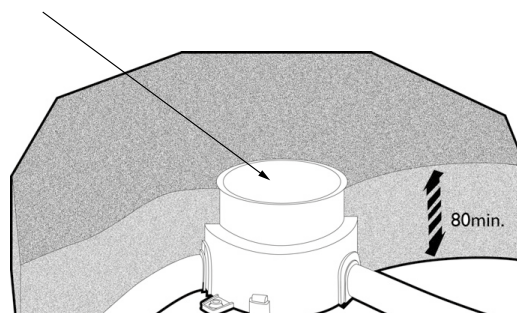
Fixing the flush mounting box to the floor



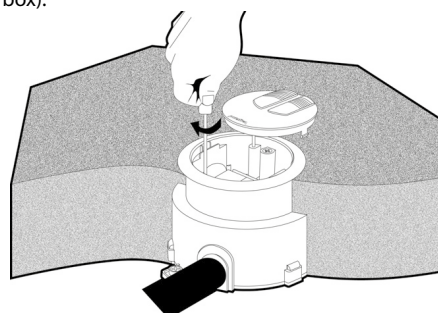
Minimum installation height: 80 mm

Flush mounting box can be supplied by ICTA conduits of Ø 20 or 25 mm.

When installing in a concrete screed, the opening of the mounting box must be sealed — for example with adhesive tape or cardboard — before pouring the screed.



Turn the screws inside the floor box a quarter turn to release the claws, then tighten fully (the claws lock under the edge inside the flush mounting box).



4. WIRING DEVICES SUPPORTS

Supports allow mounting of:

- 1 standard Mosaic 2-module socket:



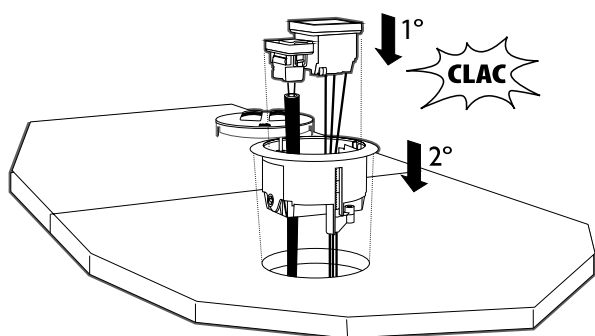
and

- 1 RJ45 socket (1 module only)

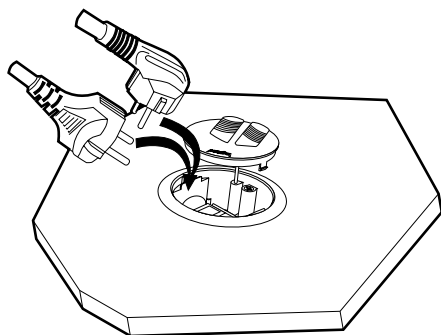


on raised or screed floor.

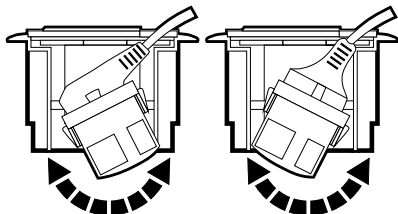
Sockets front clipping directly in 3-module support.



Possibility to install either a straight plug or an angled plug.

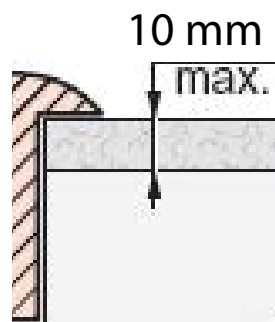


The device support inside the 3-module box tilts, allowing a straight plug or an angled plug to be inserted.



5. TECHNICAL CHARACTERISTICS

- Compression test: 500N on 1 cm² for 1 minute:
compliant with Standard IEC 60670 23 (2004).
- Lid operation test : internal testing shows no product degradation
after 10 000 opening/closing cycles.
- Final coating thickness :



6. MATERIAL CHARACTERISTICS

The 3-module floor boxes are made of PC/ABS plastic RAL 7031.
Operating, transport, and storage temperature: -5°C to +60°C.