

## Instrukcja montażu wkładu telefonicznego

ISO 9001:2015 QMS

**KONTAKT simon**

43-500 Czechowice-Dziedzice  
ul. Bestwińska 21

POLSKA

tel. +48 32 324 63 00

fax +48 32 215 35 55

[www.kontakt-simon.com.pl](http://www.kontakt-simon.com.pl)

e-mail: [info@kontakt-simon.com.pl](mailto:info@kontakt-simon.com.pl)

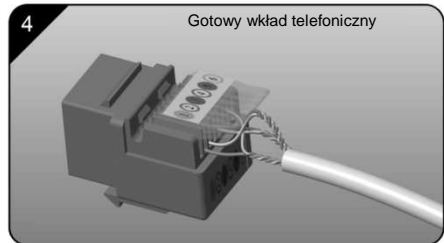
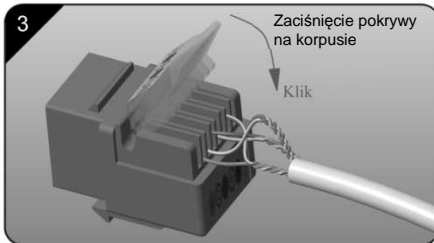
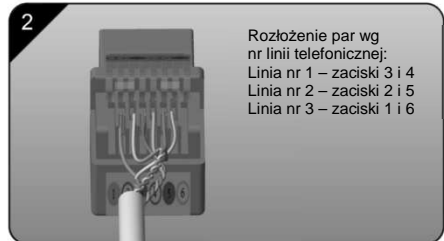
...T1/... Gniazdo telefoniczne pojedyncze RJ12

...T2/... Gniazdo telefoniczne podwójne RJ12

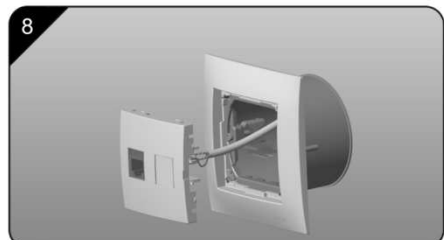
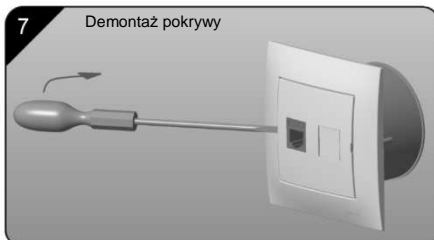
...5T/... Gniazdo komputerowe RJ45 kat. 5e UTP + telefoniczne RJ12

...6T/... Gniazdo komputerowe RJ45 kat. 6 UTP + telefoniczne RJ12

### Montaż zestawu:



### Demontaż zestawu:



# Telephone insert Installation instructions

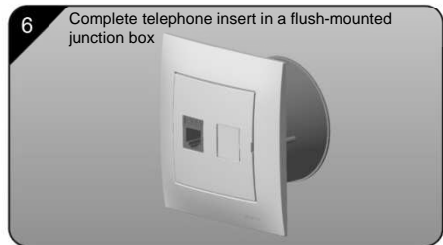
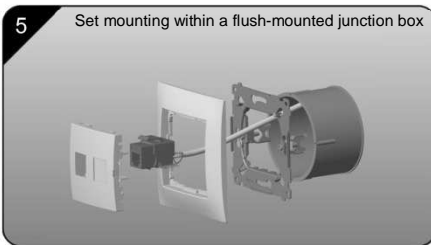
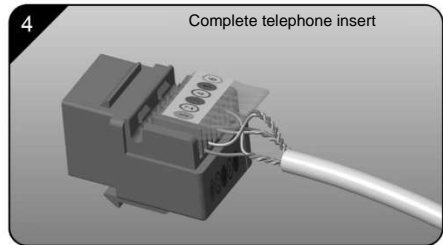
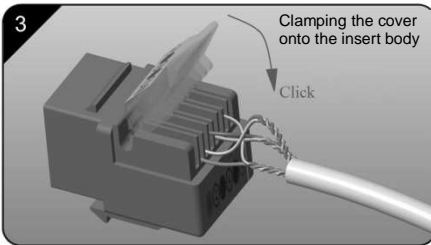
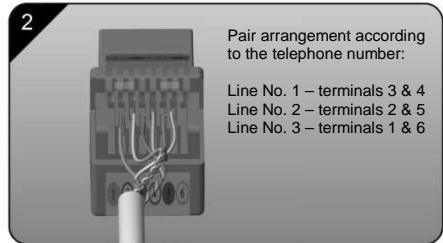
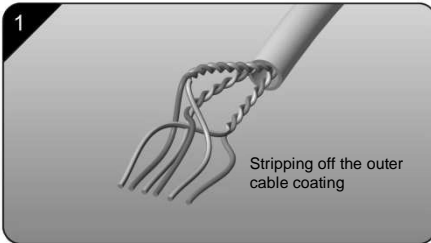
ISO 9001:2015 QMS

**KONTAKT SIMON**

43-500 Czechowice-Dziedzice  
ul. Bestwińska 21  
POLAND  
tel. +48 32 324 63 00  
fax +48 32 215 35 55  
[www.kontakt-simon.com.pl](http://www.kontakt-simon.com.pl)  
e-mail: [info@kontakt-simon.com.pl](mailto:info@kontakt-simon.com.pl)

- ...T1/... RJ12 single telephone socket
- ...T2/... RJ12 double telephone socket
- ...5T/... RJ45 cat. 5e UTP computer socket + RJ12 telephone socket
- ...6T/... RJ45 cat. 6 UTP computer socket + RJ12 telephone socket

## Set installation:



## Set dismantling:

