



DAMP PROOF HOUSING GEN 3

MIT ON/OFF-, DALI- UND NOT-VERSIONEN

HIGHLIGHTS

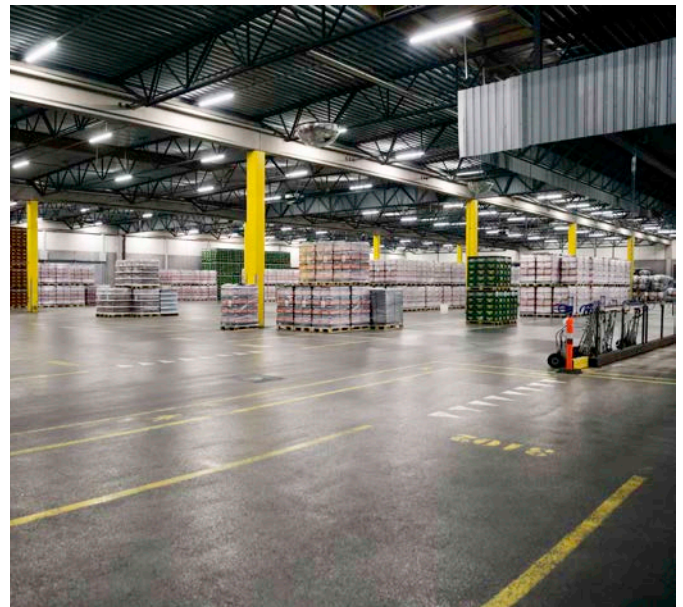
- Robustes Gehäuse
- Werkzeuglose Installation
- Leuchtengehäuse, verfügbar für 1 oder 2 T8-LED-Röhren

PRODUKTVORTEILE

- 5 Jahre Garantie
- Geeignet für LED TUBE T8 EM
- Schutzart: IP65
- Integrierte elektrische Sicherung

ANWENDUNGSBEREICHE

- Garagen
- Unterführungen
- Lagerflächen
- Fertigungsbereiche



ALLE INFORMATIONEN ZUM
SORTIMENT FINDEN SIE AUF:



| Produktbezeichnung | EAN | ELDAS | Anzahl Tubes |  l [mm] |  w [mm] |  h [mm] | CHF * |
|---|---------------|-----------|--------------|---|---|---|--------|
| DP HOUSING 600 P 1XLAMP IP65 | 4099854118050 | 941005490 | 1 | 675 mm | 65 mm | 70 mm | 21.00 |
| DP HOUSING 600 P 2XLAMP IP65 | 4099854118074 | 941005460 | 2 | 675 mm | 95 mm | 70 mm | 27.90 |
| DP HOUSING 1200 P 1XLAMP IP65 | 4099854118098 | 941005640 | 1 | 1280 mm | 65 mm | 70 mm | 32.10 |
| DP HOUSING 1200 P 2XLAMP IP65 | 4099854118111 | 941005400 | 2 | 1280 mm | 95 mm | 70 mm | 40.70 |
| DP HOUSING 1500 P 1XLAMP IP65 | 4099854118159 | 941005670 | 1 | 1585 mm | 65 mm | 70 mm | 38.50 |
| DP HOUSING 1500 P 2XLAMP IP65 | 4099854118210 | 941005440 | 2 | 1585 mm | 95 mm | 70 mm | 51.40 |
| DP HOUSING DALI 1200 P 1XLAMP IP65 LEDV | 4099854146442 | 941005600 | 1 | 1280 mm | 65 mm | 70 mm | 125.00 |
| DP HOUSING DALI 1200 P 2XLAMP IP65 LEDV | 4099854146466 | 941005660 | 2 | 1280 mm | 95 mm | 70 mm | 133.00 |
| DP HOUSING DALI 1500 P 1XLAMP IP65 LEDV | 4099854146480 | 941005430 | 1 | 1585 mm | 65 mm | 70 mm | 131.00 |
| DP HOUSING DALI 1500 P 2XLAMP IP65 LEDV | 4099854146503 | 941005550 | 2 | 1585 mm | 95 mm | 70 mm | 143.00 |
| DP HOUSING EM 1200 P 1XLAMP IP65 LEDV | 4099854148880 | 941005680 | 1 | 1280 mm | 65 mm | 70 mm | 237.00 |
| DP HOUSING EM 1200 P 2XLAMP IP65 LEDV | 4099854148903 | 941005630 | 2 | 1280 mm | 95 mm | 70 mm | 245.00 |
| DP HOUSING EM 1500 P 1XLAMP IP65 LEDV | 4099854148927 | 941005700 | 1 | 1585 mm | 65 mm | 70 mm | 245.00 |
| DP HOUSING EM 1500 P 2XLAMP IP65 LEDV | 4099854148941 | 941005510 | 2 | 1585 mm | 95 mm | 70 mm | 255.00 |