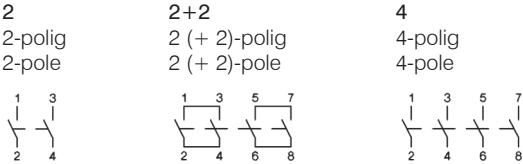
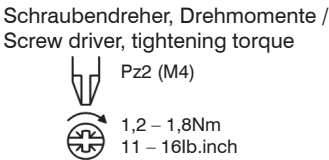
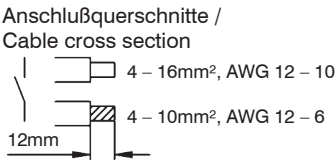
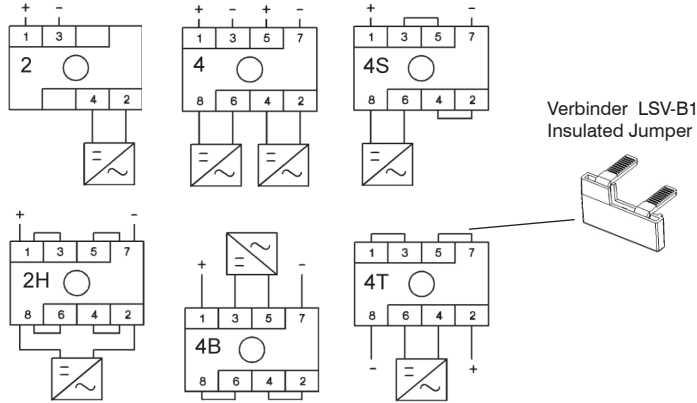


DC-Lasttrennschalter für Photovoltaik (2/4 polig)  
DC-Switch Disconnecter for Photovoltaic (2/4 pole)

Schaltplan / Wiring diagram



Anwendungsbeispiele / Switching examples



This product should only be installed by suitably qualified person

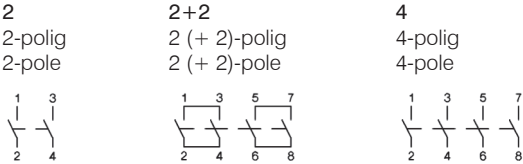
Änderungen vorbehalten  
Specifications are subject to change without notice

04 2015

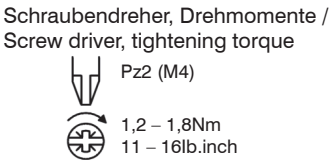
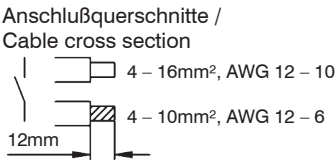
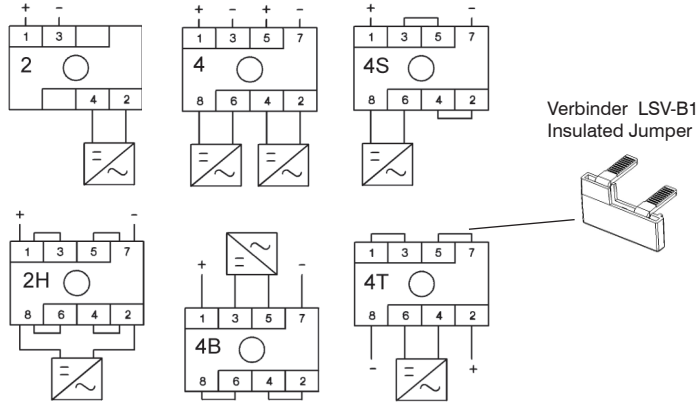
D959N

DC-Lasttrennschalter für Photovoltaik (2/4 polig)  
DC-Switch Disconnecter for Photovoltaic (2/4 pole)

Schaltplan / Wiring diagram



Anwendungsbeispiele / Switching examples



This product should only be installed by suitably qualified person

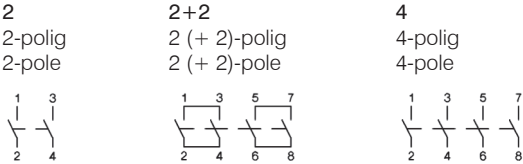
Änderungen vorbehalten  
Specifications are subject to change without notice

04 2015

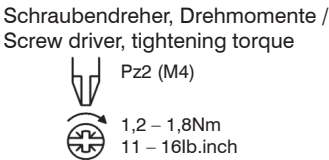
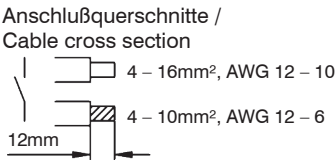
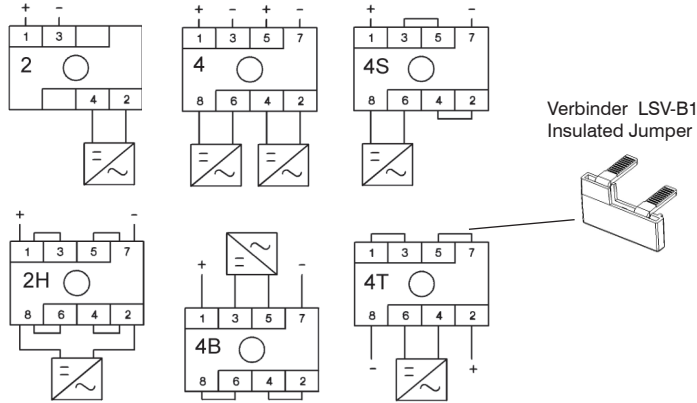
D959N

DC-Lasttrennschalter für Photovoltaik (2/4 polig)  
DC-Switch Disconnecter for Photovoltaic (2/4 pole)

Schaltplan / Wiring diagram



Anwendungsbeispiele / Switching examples



This product should only be installed by suitably qualified person

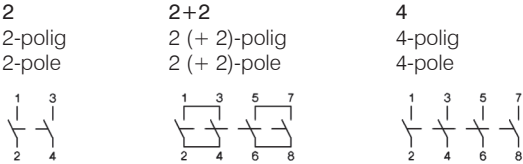
Änderungen vorbehalten  
Specifications are subject to change without notice

04 2015

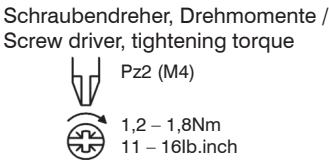
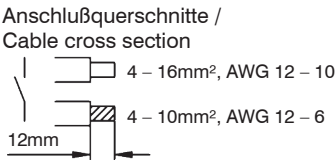
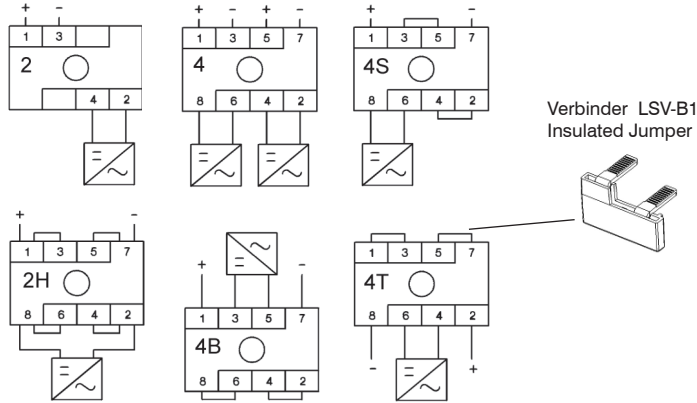
D959N

DC-Lasttrennschalter für Photovoltaik (2/4 polig)  
DC-Switch Disconnecter for Photovoltaic (2/4 pole)

Schaltplan / Wiring diagram



Anwendungsbeispiele / Switching examples



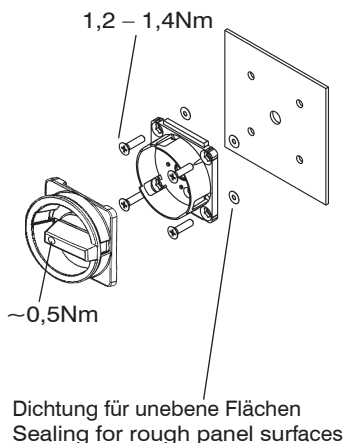
This product should only be installed by suitably qualified person

Änderungen vorbehalten  
Specifications are subject to change without notice

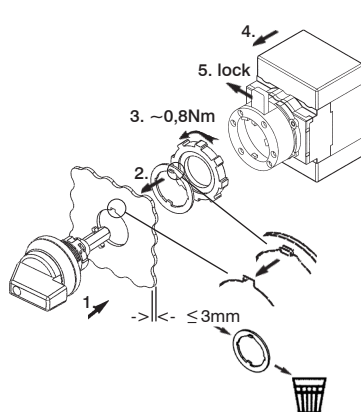
04 2015

D959N

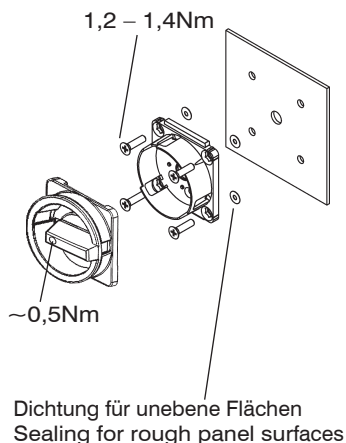
### Einbau 4-Lochbefestigung / Panel mounting



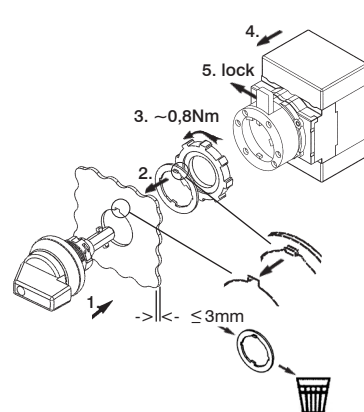
### Zentralbefestigung / Single hole (22,5mm) mounting



### Einbau 4-Lochbefestigung / Panel mounting

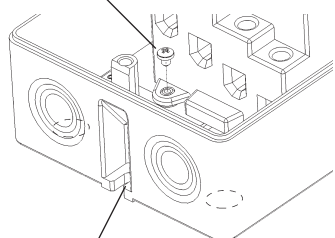


### Zentralbefestigung / Single hole (22,5mm) mounting



### Lasttrennschalter im Gehäuse Enclosed switch-disconnectors

Schraube (2) zur Befestigung im Gehäuse / Additional screws (2) for fixing of the switch in the enclosure  
~0,6Nm



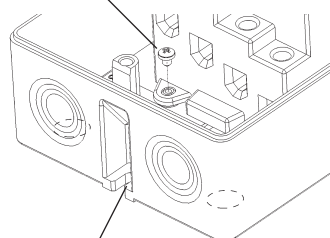
Externe Lochbefestigung um Schutzart des Gehäuses zu gewährleisten. / External mounting points are provided to maintain enclosure IP rating.

04 2015

D959N

### Lasttrennschalter im Gehäuse Enclosed switch-disconnectors

Schraube (2) zur Befestigung im Gehäuse / Additional screws (2) for fixing of the switch in the enclosure  
~0,6Nm

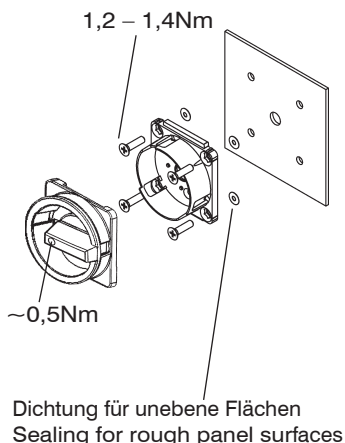


Externe Lochbefestigung um Schutzart des Gehäuses zu gewährleisten. / External mounting points are provided to maintain enclosure IP rating.

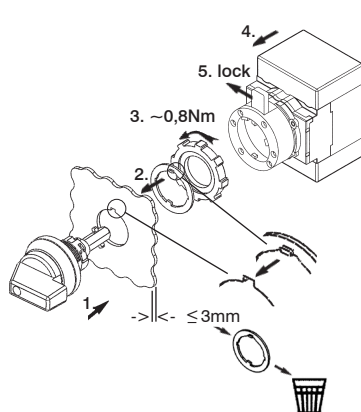
04 2015

D959N

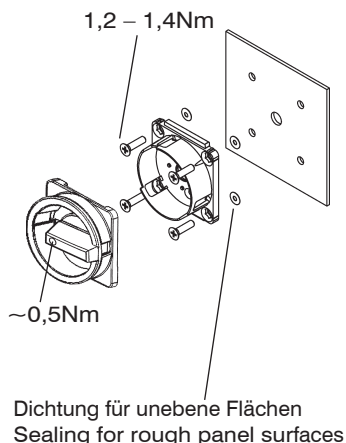
### Einbau 4-Lochbefestigung / Panel mounting



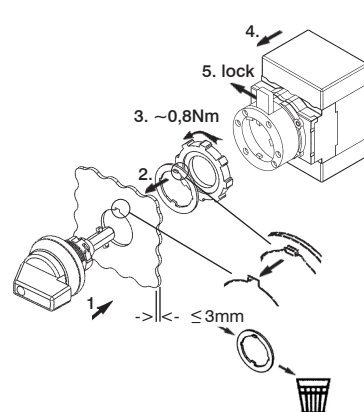
### Zentralbefestigung / Single hole (22,5mm) mounting



### Einbau 4-Lochbefestigung / Panel mounting

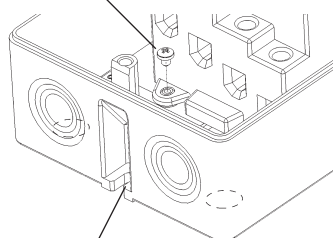


### Zentralbefestigung / Single hole (22,5mm) mounting



### Lasttrennschalter im Gehäuse Enclosed switch-disconnectors

Schraube (2) zur Befestigung im Gehäuse / Additional screws (2) for fixing of the switch in the enclosure  
~0,6Nm



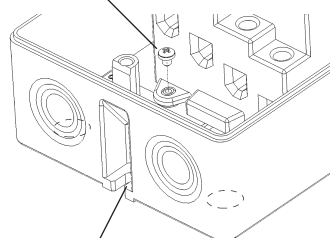
Externe Lochbefestigung um Schutzart des Gehäuses zu gewährleisten. / External mounting points are provided to maintain enclosure IP rating.

04 2015

D959N

### Lasttrennschalter im Gehäuse Enclosed switch-disconnectors

Schraube (2) zur Befestigung im Gehäuse / Additional screws (2) for fixing of the switch in the enclosure  
~0,6Nm



Externe Lochbefestigung um Schutzart des Gehäuses zu gewährleisten. / External mounting points are provided to maintain enclosure IP rating.

04 2015

D959N