

# Vistop 63 to 160 A Isolating switches

Catalogue number(s) : 0 225 12/15/16/18/20/22/25/27/34/39  
0 225 44/46/51/53/54/56  
0 223 12/15/16/18/20/22/27/34/39/51/53

## CONTENTS Page

1. Use	1
2. Range	1
3. Overall dimensions	1
4. Technical features	2
5. Conformity	2
6. Installation	2
7. Accessories	2-3



## 1. USE

Safety isolating switches with visible full load break and positive action of the contacts. Double breaking of the phases by self-cleaning contacts with rapid make and break movement.

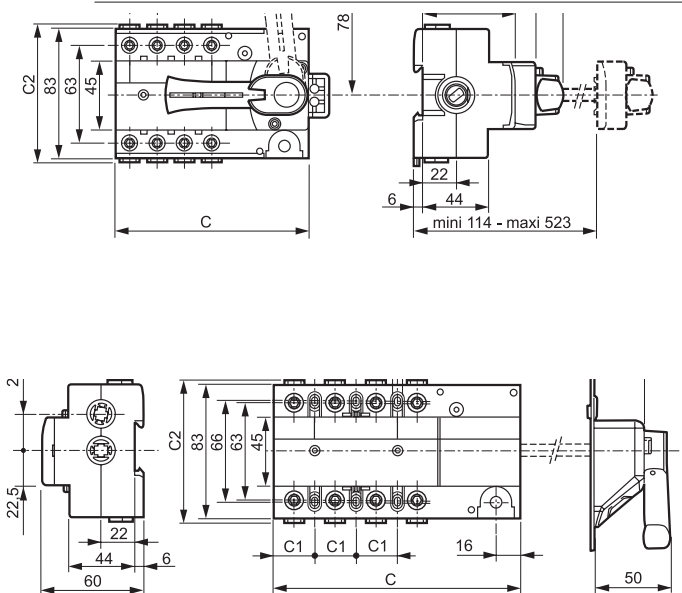
## 2. RANGE

- 3-pole and 4-pole 63 - 100 - 125 - 160 A
- 2 versions for mounting on faceplate :
  - with left or right side handle.
  - external : supplied complete with a seal to maintain the IP (up to IP 55) protection of the housing, mounting accessories, self-adhesive drilling template, adjustable extension shaft (30 to 170 mm).
  - direct or external front handle with Cat. No. 227 32 to be ordered separately.
  - label holder for identification
  - connection via cage terminals with PZ2 screw clamping (63A) and Allen key (100 to 160A).
  - screw fixing or on rail EN 50022 (only on rail for Vistop 63 A).
  - option of attaching a 2P – 16A auxiliary isolating switch (for 100 and 160 A ratings) and one or two auxiliary NC + NO contacts.

## 2. RANGE (continued)

	Number of 17.5 mm modules Front handle	External right or left side handle
<b>160 A</b>		
Black handle	7.5	7.5
3-pole	9	9
4-pole		
Red handle/yellow faceplate		
3-pole	7.5	-
4-pole	9	-

## 3. OVERALL DIMENSIONS



	Front handle			External side handle		
	63 A	100 A, 125 A, 160 A		63 A	100 A, 125 A, 160 A	
	3-, 4-poles	3P	4 P	3-, 4-poles	3 P	4 P
C	125	133	160	125	133	160
C <sub>1</sub>	17.7	26.7		17.7	26.7	
C <sub>2</sub>	91	91		91	91	

Number of 17.5 mm modules  
Front handle External right or left side  
handle

<b>63 A</b>		
Black handle		
3-pole	7	7
4-pole	7	7
Red handle/yellow faceplate		
3-pole	7	7
4-pole	7	7
<b>100 A</b>		
Black handle		
3-pole	7.5	7.5
4-pole	9	9
Red handle/yellow faceplate		
3-pole	7.5	-
4-pole	9	9
<b>125 A</b>		
Black handle		
3-pole	7.5	7.5
4-pole	9	9
Red handle/yellow faceplate		
3-pole	7.5	-
4-pole	9	-

# Vistop 63 to 160 A Isolating switches

Catalogue number(s) : 0 225 12/15/16/18/20/22/25/27/34/39  
0 225 44/46/51/53/54/56  
0 223 12/15/16/18/20/22/27/34/39/51/53

## 4. TECHNICAL FEATURES

	Vistop				Isolating switch 16 A
Thermal rating (Ith)	63 A	100 A	125 A	160 A	
Terminals	cage	cage	cage	cage	cage
con- nection	Cu (flexible) 4 to 35 <sup>2</sup>	4 to 50 mm 6 <sup>2</sup>			6 <sup>2</sup>
	Cu (rigid) 4 to 50 <sup>2</sup>	4 to 70 mm 6 <sup>2</sup>			6 <sup>2</sup>
Insulation voltage (Ui)	690 V ac	800 V ac	800 V ac	800 V ac	400 V ac
Impulse withstand voltage (Uimp)	8 Kv ac	8 Kv ac	8 Kv ac	8 Kv ac	-
AC 22 A	400 V 63 A (35 kW)	100 A (55 kW)	125 A (70 kW)	160 A (88 kW)	16 A
AC 23 A <sup>(1)</sup>	500 V 63 A (44 kW)	100 A (69 kW)	125 A (87 kW)	160 A (110 kW)	-
	690 V 40 A (38 kW)	100 A (96 kW)	125 A (120 kW)	125 A (120 kW)	
DC 22 A/250 V <sup>(1)(2)</sup>	*	100	125	125	16 A
DC 23 A/250 V <sup>(1)(2)</sup>	*	100	125	125	10 A
Breaking capacity (kA peak)	15	15	15	15	2
1 s resistant current (kA efficacy) (Icw)	2.5	3.5	3.5	3.5	0.3
Icc with fuses (kA rms)	100	100	100	80	100
Max rating of fuses	63 A	100 A (gG) 63 A (aM) <sup>(3)</sup>	125 A (gG) 125 A (aM) <sup>(3)</sup>	160 A (gG) 125 A (aM)	-
Short-circuit capacity (kA prospective peak) (Icm)	7	12	12	12	1
Mechanical endurance (No. of operations)	> 30 000	> 30 000	> 30 000	> 30 000	> 30 000
Index of protection	IP 2x B IP 3x C under faceplate) à partir de 6 <sup>2</sup>	IP 2x B (IP 3x C under faceplate) from 10 <sup>2</sup>			

(1) Test conditions in accordance with IEC 60947-3

AC = alternating current DC = direct current A = use with frequent operations

AC 22 A/DC 22 A: resistive motor breaking

AC 23 A/DC 23 A: inductive motor breaking

(2) Number of breaking contacts: 2

(3) 100 A (aM) in blade-type cartridge fuses

(4) Values correspond to the device mounted on Vistop 100 - 125 - 160 A

## Consumption when hot at rated current according to IEC 947.1

Rating	Consumption
63 A	0.8 W
100 A	2.1 W
125 A	3.3 W
160 A	5.3 W

Storage temperature: - 10°C to + 70°C.

Operating temperature: - 5°C to + 70°C.

Materials:

- Casing in polyamide 960°C

- Indicator light in polycarbonate 750°C

## 5. CONFORMITY

Conform to standards NF C 63-130, NF EN 60943-3, IEC 60947-3, BS EN 60947-3, VDE 0660, NBN EN 60947-3, CNOMO E03 - 15-611 R

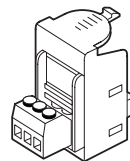
## 6. INSTALLATION

- Fixing
- Vistop 63 A: fixing on rail
- Vistop 100 - 125 - 160 A: Screw-fixing or on rail with bistable claws with locking
- Connection in cage terminals :
  - 63 A : PZ2, tightening at 2,8Nm maxi
  - 100 - 125 - 160A : Allen key, tightening at 6Nm maxi

## 7. ACCESSORIES

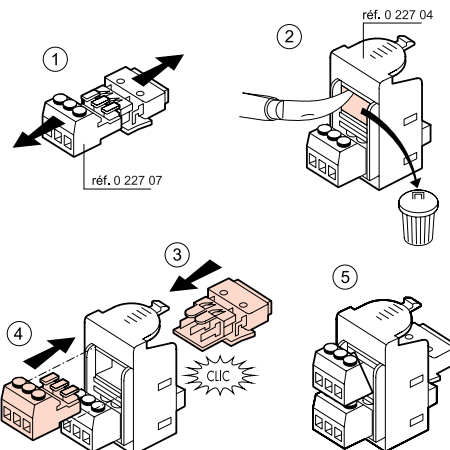
0 227 04

Contact 0 + C



0 227 07

Additional NO + NC auxiliary contact,  
adds to the 227 04 for 2 N/C + 2 N/O  
mounting



0 227 98

Set of two divisible, sealable terminal  
shields

Prevents access to the connection and  
fixing screws for application of commer  
cial sector tariff (Vistop 100 to 160 A)



0 048 67

Distribution terminal – 6 outputs,  
25 mm<sup>2</sup> mounts directly in the down-  
stream terminal of the Vistop



# Vistop 63 to 160 A Isolating switches

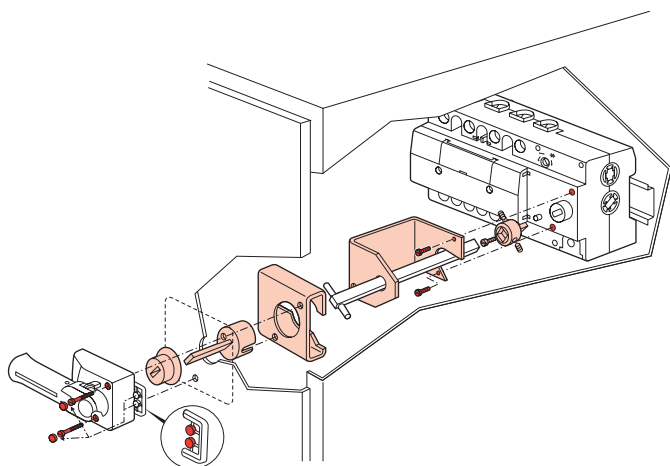
Catalogue number(s) : 0 225 12/15/16/18/20/22/25/27/34/39  
0 225 44/46/51/53/54/56  
0 223 12/15/16/18/20/22/27/34/39/51/53

## 7. ACCESSORIES (continued)

0 227 32

### External front handle

Kit comprising: connecting rod, bracket, self-adhesive drilling template, mounting accessories including a seal for maintaining IP 55 protection of the housing, and locking mechanism preventing the door being opened when the circuit is closed. For Vistop 63, 100, 125 and 160 A : door distance 35 to 470 mm.



0 227 97

### Security padlock supplied with two keys

(different key combination for each padlock).  
Shackle  $\varnothing$  6 mm

