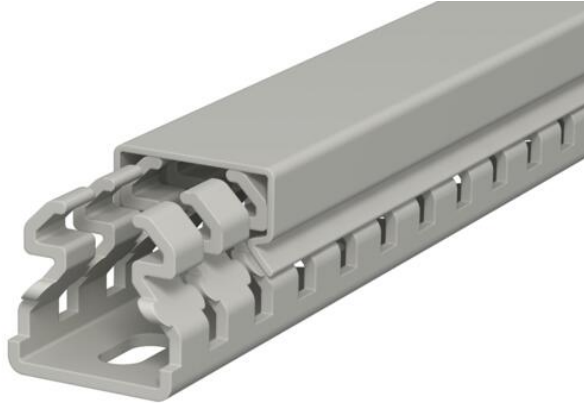


Technical data sheet

Wiring trunking, type LKV 25025

Item number: 6178302



Wiring duct according to DIN EN 50085-2-3, incl. cover and base perforation, for horizontal and vertical routing of electrical cables in the switchgear cabinet. Designed as a DIN duct. Retainers are broken out without tools. The flush-floor routing of cables is possible through predetermined break points. Tested to DIN EN 50085-2-3. Special lengths on request.



PVC Polyvinylchloride

Master data

Item number	6178302
Type	LKV 25025
Description 1	Slotted cable trunking system
Manufacturer	OBO
Dimension	25x25x2000
Colour	Stone grey; RAL 7030
Material	Polyvinylchloride
Smallest sales unit	32
Unit of quantity	Metre
Weight	24 kg
Weight unit	kg/100 m
CO2 Footprint (GWP) Cradle-to-Gate	0,6619 kg CO2e / 1 Meter

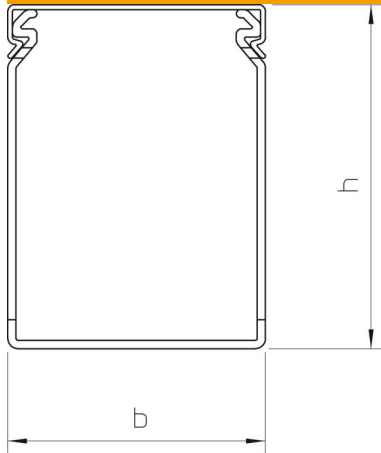
Technical data sheet

Wiring trunking, type LKV 25025

Item number: 6178302



Dimensions



Length	2,000 mm
Width	25 mm
Height	25 mm

Technical data

Side wall version	Slotted
Fastening type	Base perforation
Flexible	no
Halogen-free	no
With cover	yes
Usable cross-section	3.41 cm ²
Slot spacing	12.5 mm
Slot width	5 mm
Self-extinguishing	yes
Permitted temperature range, max.	60 °C
Permitted temperature range, min.	-5 °C