

5550 6135	DATA SHEET	
Valid from: 16.04.2025	SILVYN® FPAX-M	

SILVYN® FPAX-M is a conduit gland with fast fit and an inner seal for a safety assembling.
For the demounting we are recommending to use a screwdriver.
The gland is suitable for SILVYN® FPAS and can be used in the machine- and plant constructions.



Material:

Body	Polyamide 66
Sealing	Polyester

Technical Features:

Connecting thread	M16x1,5 up to M63x1,5 acc. to EN 60423
Nominal wide	NW 13 up to NW 54
Protection class	IP66, IP 67, IP68 (2bar) and IP69 acc. to EN 60529
	In combination with SILVYN® FPAS
Temperature range	-50°C up to +135°C

Additional features:

Fire classification	V2 acc. to UL94
Free of halogen, sulphur and phosphorus	
UV-Resistant	SILVYN® FPAX-M black

Colour:

Black
Grey

Approbation:



Reference standards:

EN 61386-1

Suitable conduits:

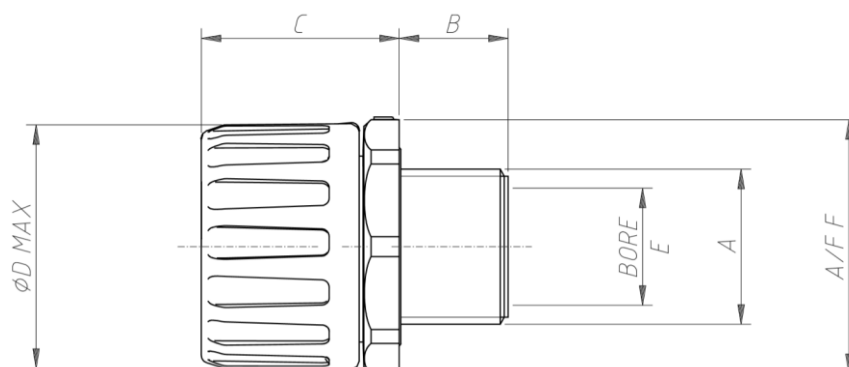
SILVYN® FPAS

For more information please see our current catalogue. Please do not hesitate to contact our laboratory if there are any questions regarding resistance against aggressive agents and special oil.

Creator: MAU1/PDP Released: DAMU1/PDP	Document: DB55506135EN Version: 05	Page 1 of 2
--	---------------------------------------	-------------

5550 6135	DATA SHEET	
Valid from: 16.04.2025	SILVYN® FPAX-M	

Product drawing:



Dimension table:

Part No.	NW	Thread A	Thread length B mm	Length C mm	Diameter mm		Wrench size A/F F mm	Weight g
					E	ØD max		
SILVYN® FPAX-M black								
55506135	13	M16x1,5	11,0	26,0	11,0	24,0	22	8,1
55506145	16	M16x1,5	11,0	30,0	11,0	29,0	28	11,7
55506155	16	M20x1,5	14,0	30,0	14,5	29,0	28	12,7
55506165	21	M20x1,5	14,0	30,0	14,5	32,0	30	13,6
55506175	28	M25x1,5	15,0	35,0	19,5	44,0	42	27,7
55506185	34	M32x1,5	16,0	37,0	26,5	51,0	49	35,5
55506195	42	M40x1,5	16,0	45,0	32,5	63,0	60	63,2
55506205	42	M50x1,5	16,0	45,0	40,5	63,0	60	69,5
55506215	54	M50x1,5	16,0	49,0	42,0	76,0	73	94,9
55506225	54	M63x1,5	16,0	49,0	53,0	76,0	73	99,2
55506226	67	M63x1,5	16,0	54,0	56,0	90,0	87	99,5
SILVYN® FPAX-M Grey								
55506235	13	M16x1,5	11,0	26,0	11,0	24,0	22	8,1
55506245	16	M16x1,5	11,0	30,0	11,0	29,0	28	11,7
55506255	16	M20x1,5	14,0	30,0	14,5	29,0	28	12,7
55506265	21	M20x1,5	14,0	30,0	14,5	32,0	30	13,6
55506275	28	M25x1,5	15,0	35,0	19,5	44,0	42	27,7
55506285	34	M32x1,5	16,0	37,0	26,5	51,0	49	35,5
55506295	42	M40x1,5	16,0	45,0	32,5	63,0	60	63,2
55507265	42	M50x1,5	16,0	45,0	40,5	63,0	60	69,5
55507275	54	M50x1,5	16,0	49,0	42,0	76,0	73	94,9
55507285	54	M63x1,5	16,0	49,0	53,0	76,0	73	99,2
55507286	67	M63x1,5	16,0	54,0	56,0	90,0	87	99,5

Creator: MAU1/PDP Released: DAMU1/PDP	Document: DB55506135EN Version: 05	Page 2 of 2
--	---------------------------------------	-------------