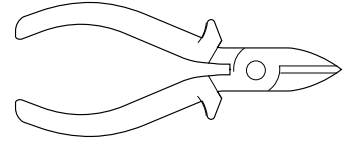
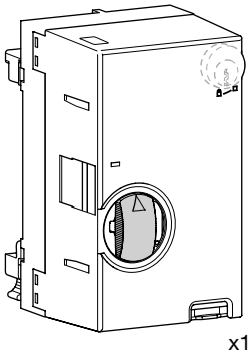


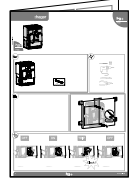
P250



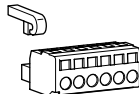
3P - 4P



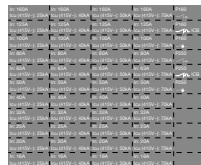
x1



x1



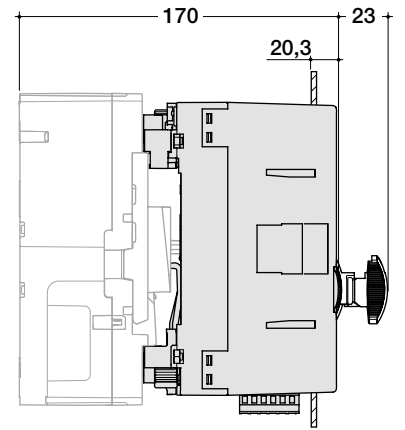
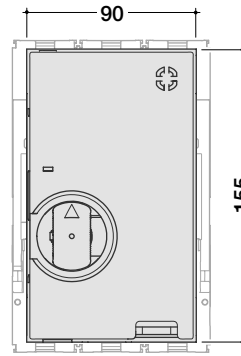
x1



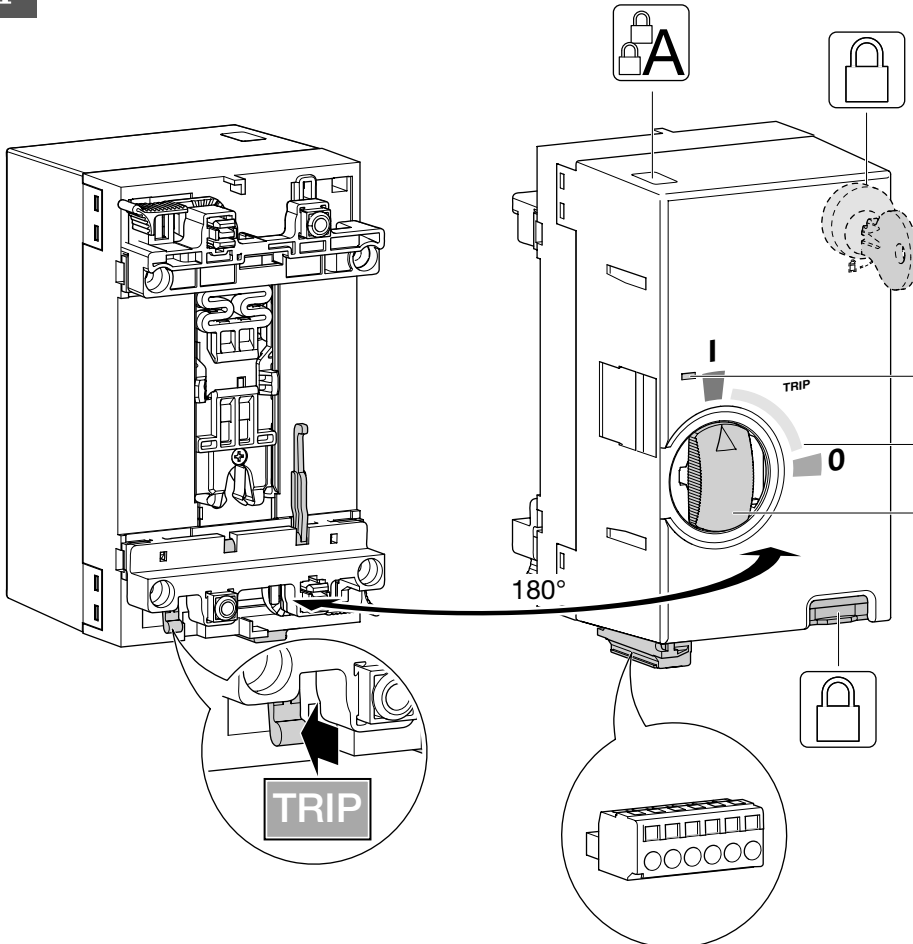
x1



x1

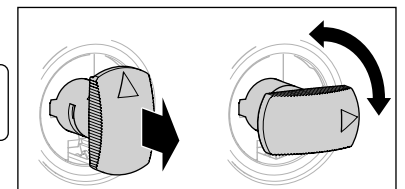
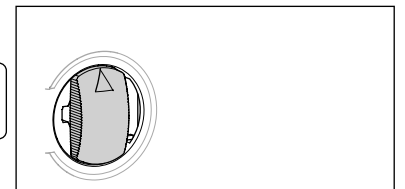


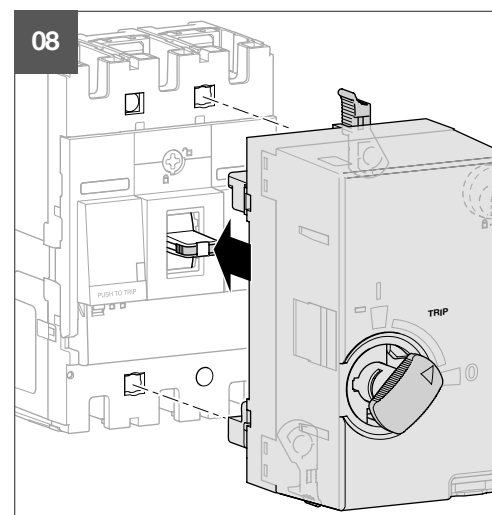
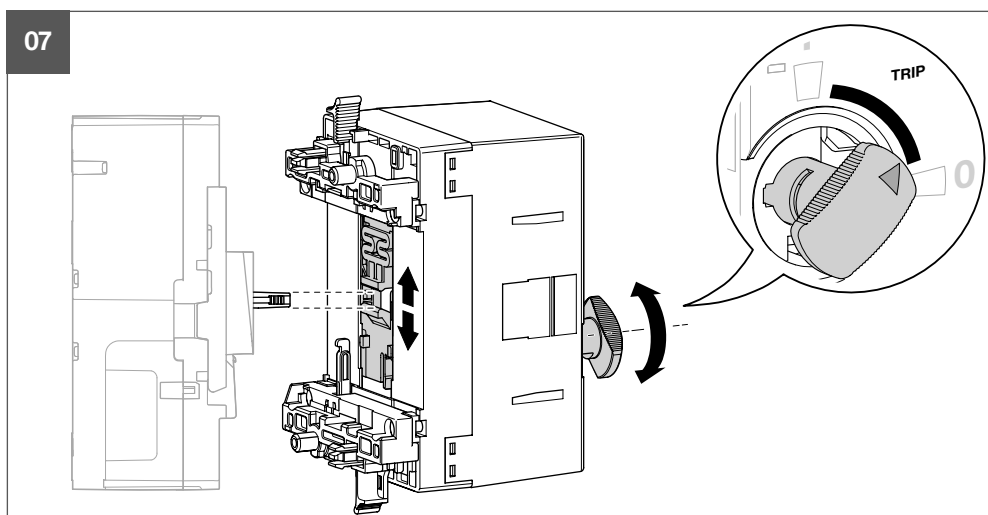
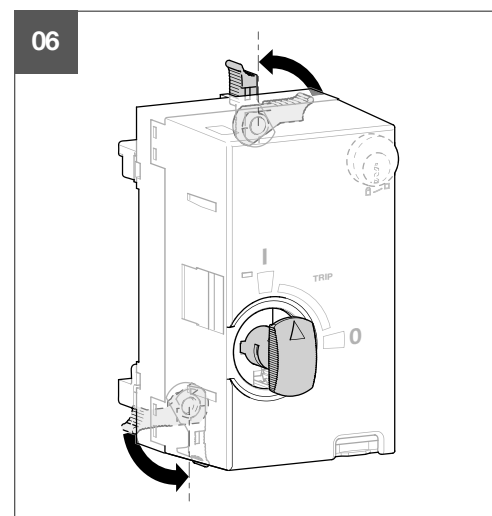
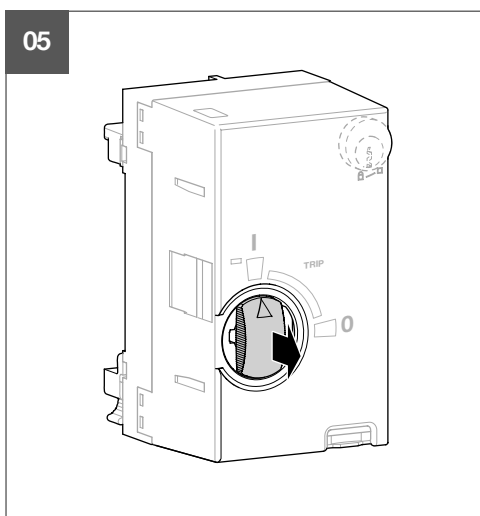
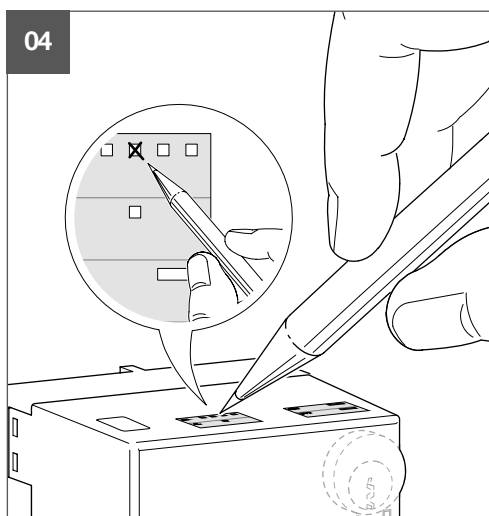
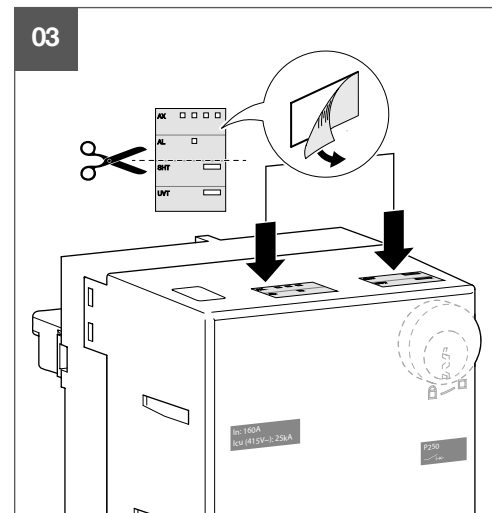
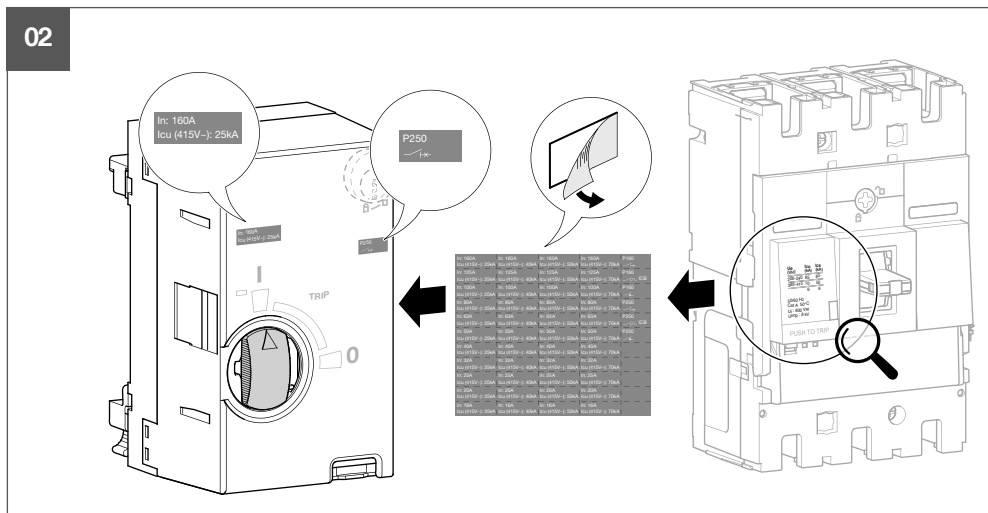
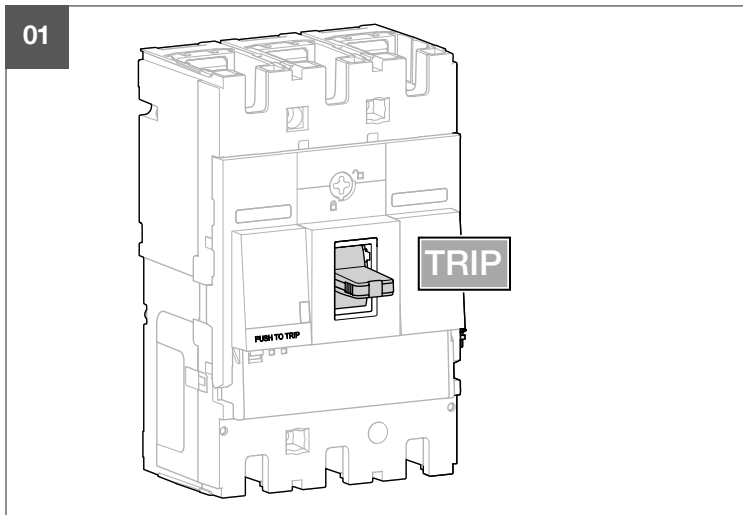
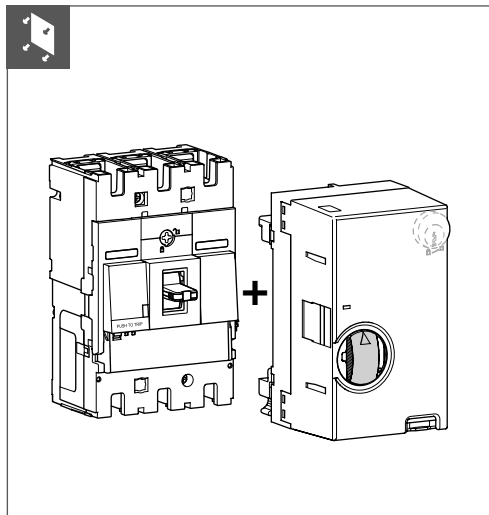
i



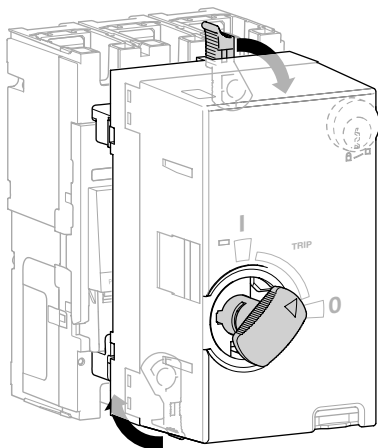
OFF	ON

ON / TRIP / OFF

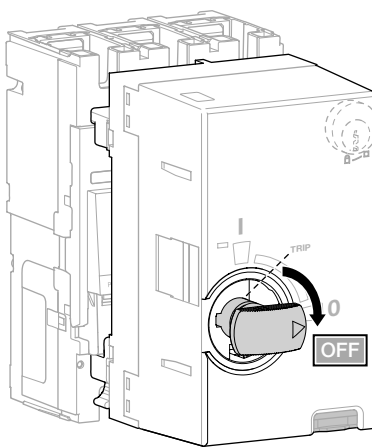




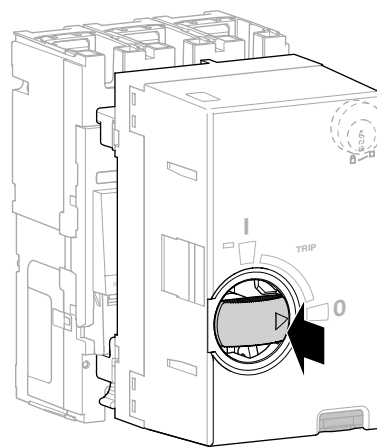
09



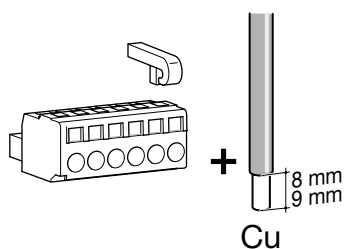
10



11



01

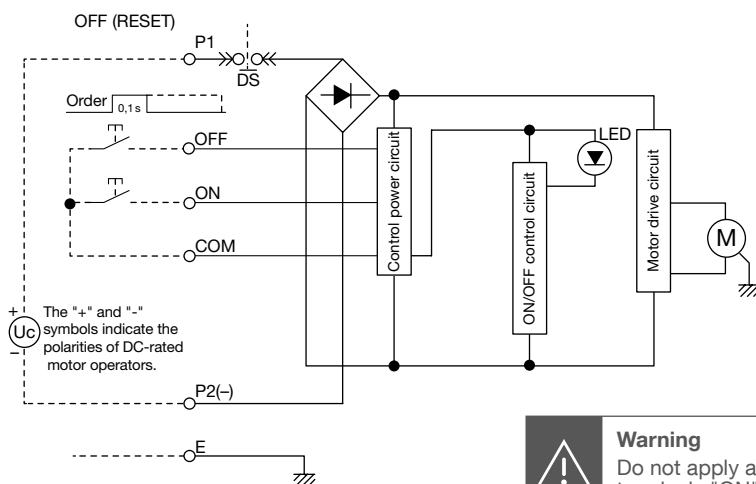
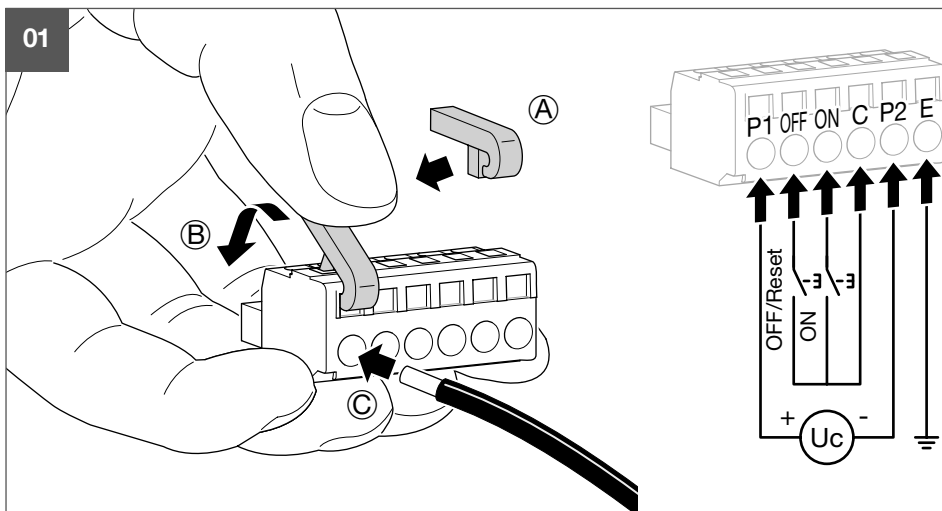


	min.	max.
	(mm ²)	
	0,8	2
	0,8	2

**Warning**

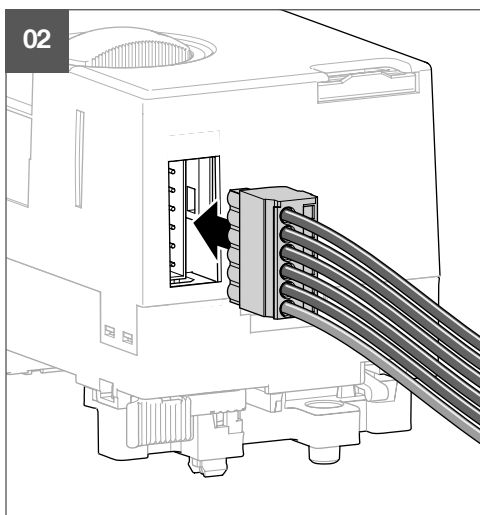
Power supply requires
300VA mini

01

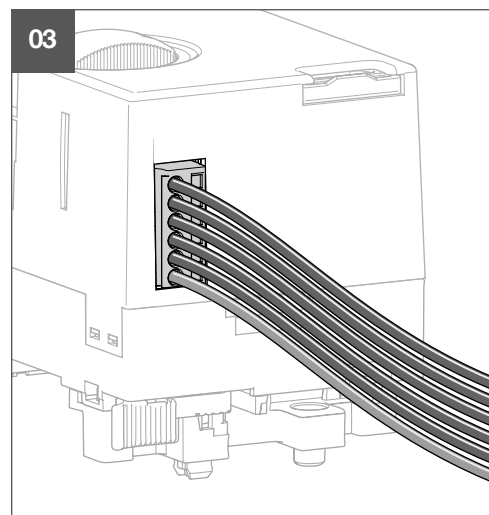
**Warning**

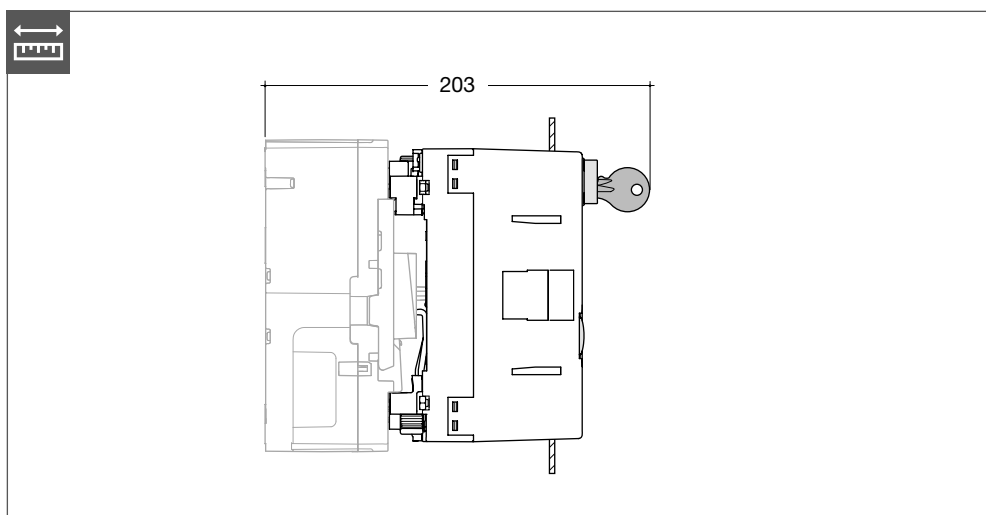
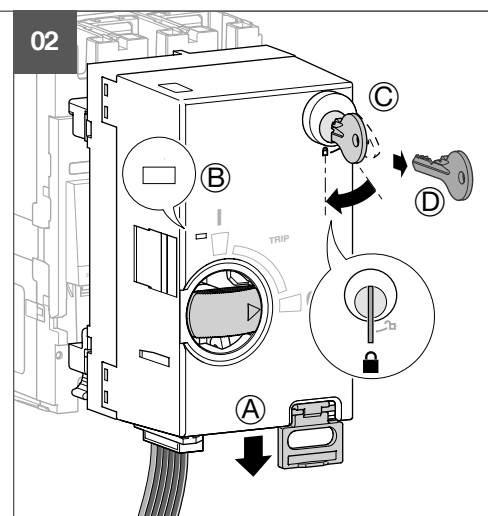
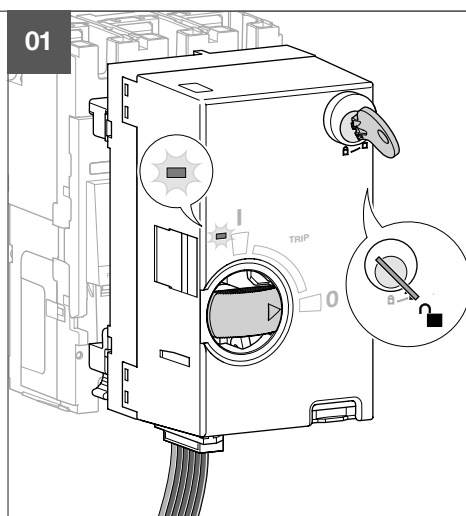
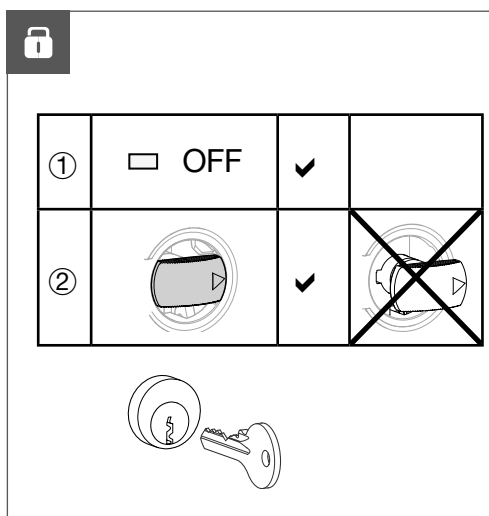
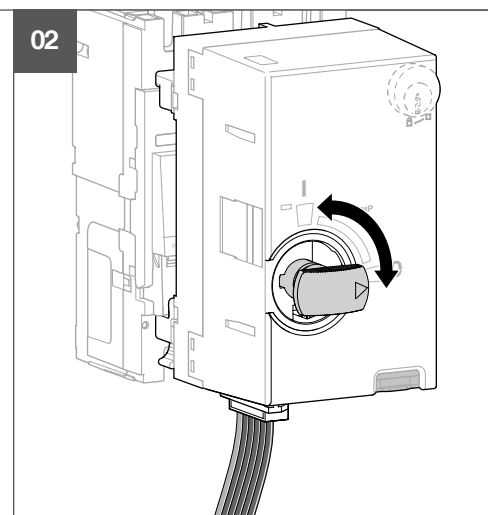
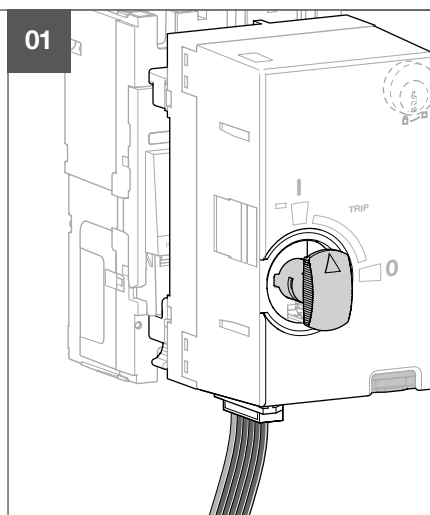
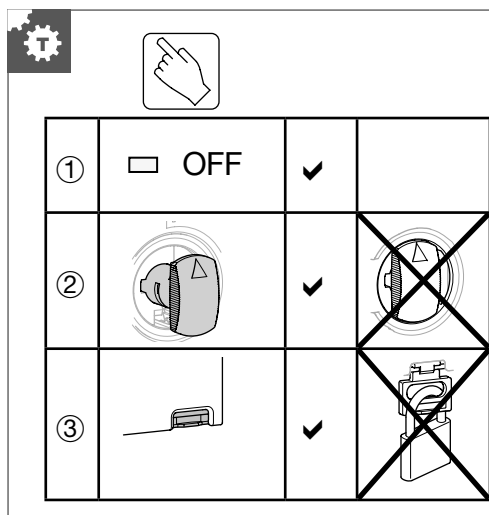
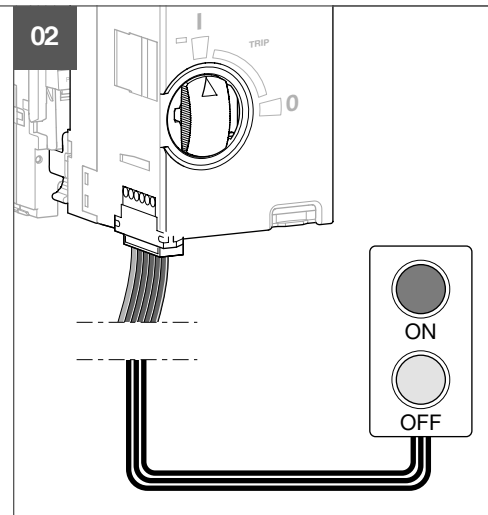
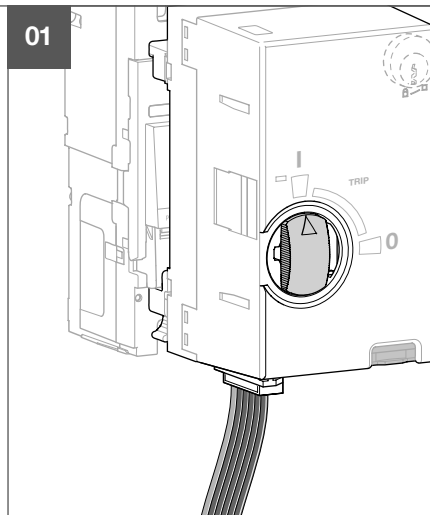
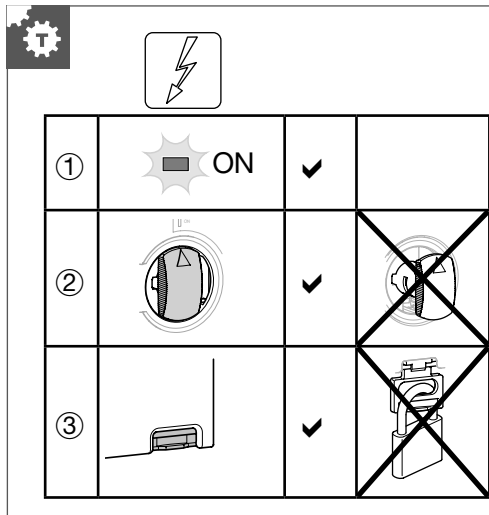
Do not apply any voltage to
terminals "ON", "OFF" and "C".
Otherwise, burn could result.

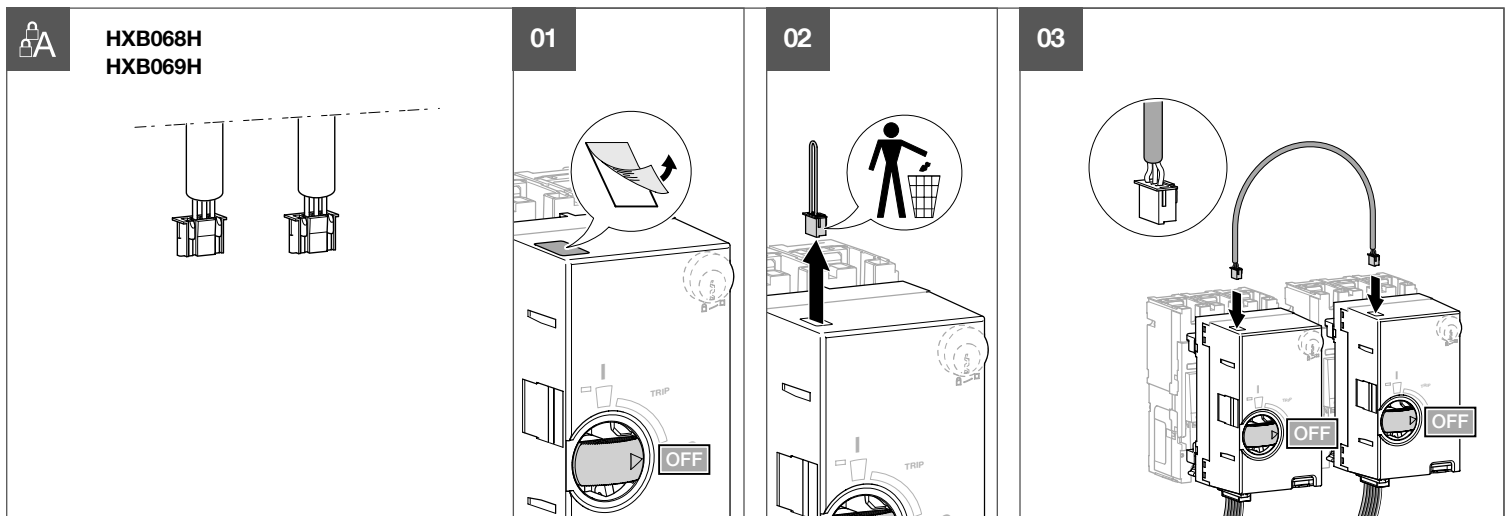
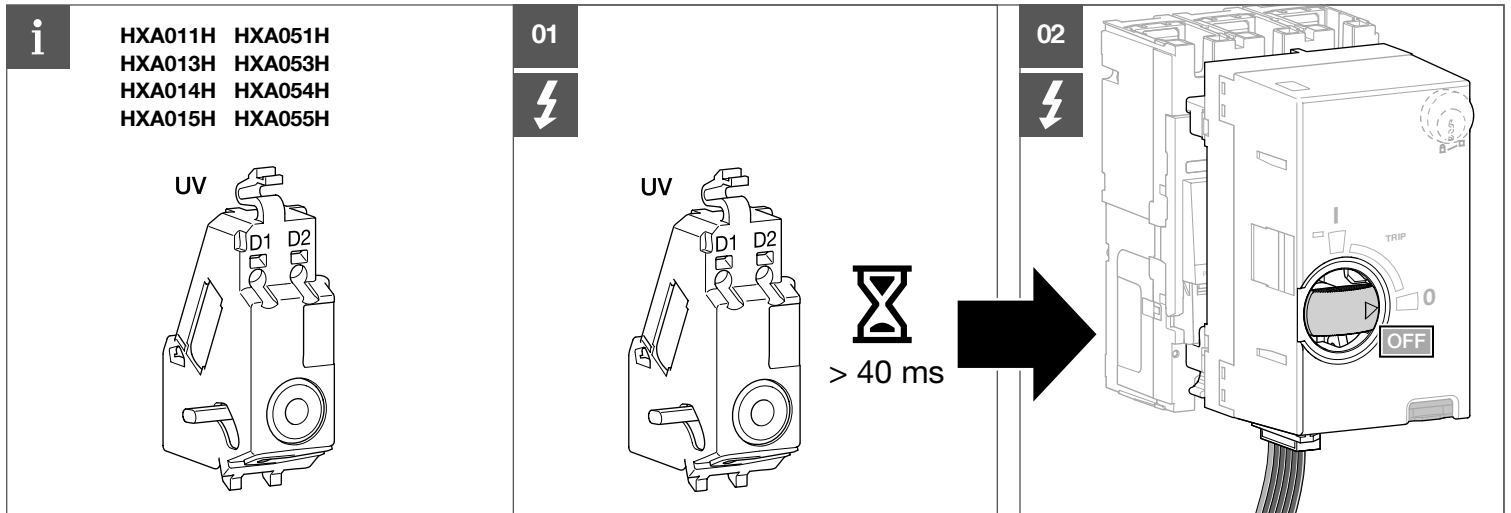
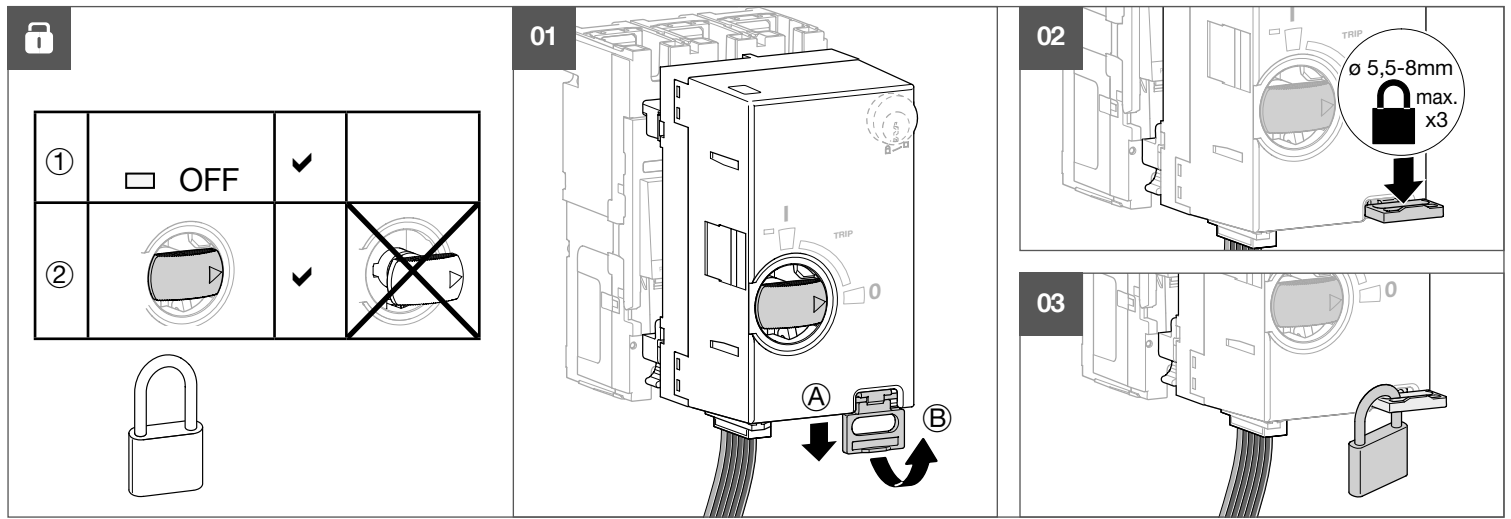
02



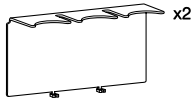
03



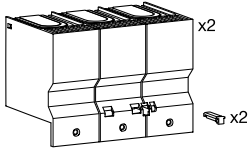




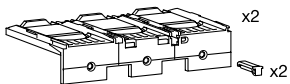
HYT050H (3P)
HYT051H (4P)



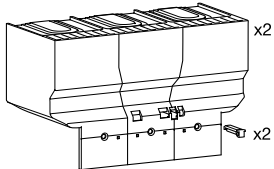
HYT021H (3P)
HYT022H (4P)



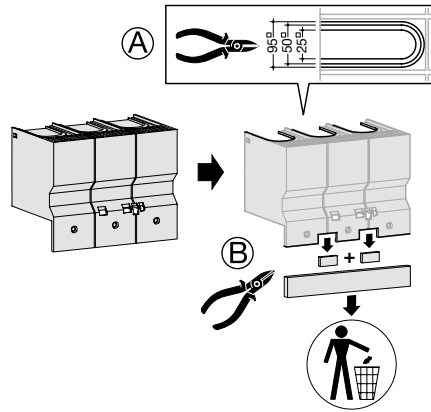
HYT025H (3P)
HYT026H (4P)



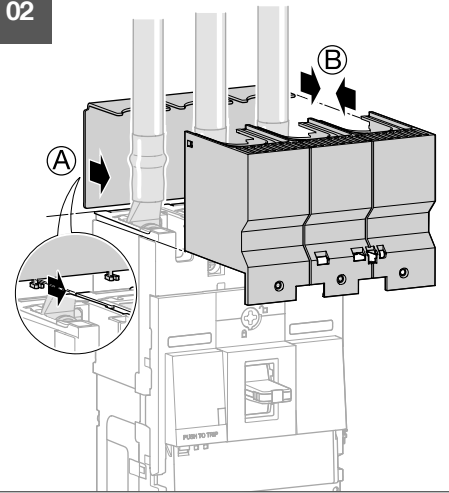
HYT023H (3P)
HYT024H (4P)



01



02



03

