

Niloé™ STEP

RJ45 socket, Double RJ45 socket

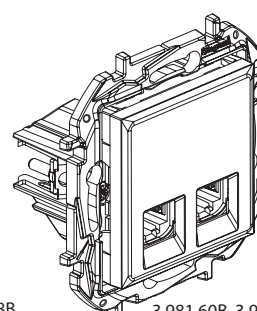
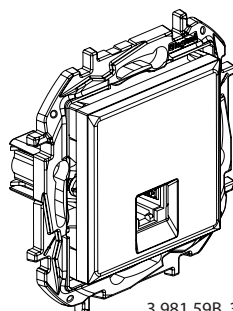
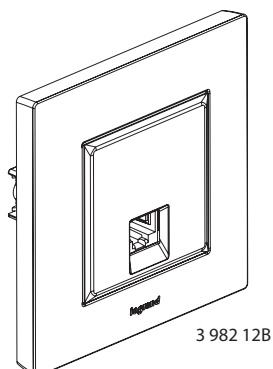
Cat. No(s): 3 981 59B/60B - 3 982 12B/56B/57B/58B - 3 984 59B/60B - 3 985

59B/60B - 8 631 57B/58B/59B/60B/61B/62B/63B/64B/65B/66B/67B/68B/69B/70B

- 8 633 57B/58B/59B/60B/61B/62B/63B/64B/65B/66B/67B/68B/69B/70B - 8 634

57B/58B/59B/60B/61B/62B/63B/64B/65B/66B/67B/68B/69B/70B - 8 635 57B/58B

/59B/60B/61B/62B/63B/64B/65B/66B/67B/68B/69B/70B - 8 649 42B/43B



1. USE

Category 6 RJ45 socket.

Allows high-speed transmissions (Gigabit Ethernet).

Can be flush mounted in a box min. 40 mm deep.

To be equipped with plate.

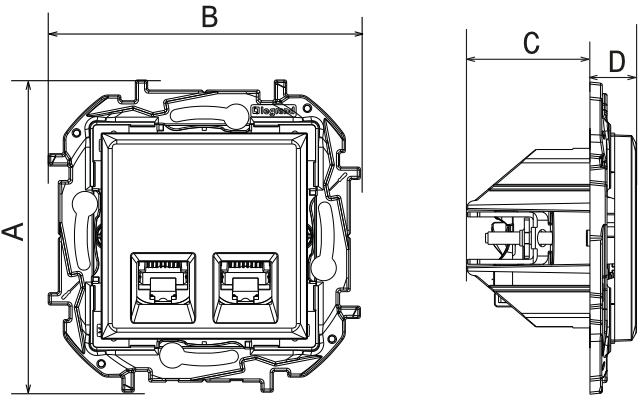
2. RANGE

Description	White	Aluminium	Medium Grey	Black
RJ45 COMPLETE CAT6 UTP	3 982 12B	-	-	
RJ45 CAT6 UTP	3 982 56B, 8 631 63B, 8 649 42B	3 982 57B, 8 633 63B	8 634 63B	3 982 58B, 8 635 63B
RJ45 CAT5E FTP	8 631 57B	8 633 57B	8 634 57B	8 635 57B
2xRJ45 CAT5E FTP	8 631 58B	8 633 58B	8 634 58B	8 635 58B
RJ45 CAT5E UTP	3 981 59, 8 631 59B	8 633 59B	3 984 59B, 8 634 59B	3 985 39B, 8 635 59B
2xRJ45 CAT5E UTP	3 981 60B, 8 631 60B	8 633 60B	3 984 60B, 8 634 60B	3 985 60B, 8 635 60B
RJ45 CAT6 FTP	8 631 61B	8 633 61B	8 634 61B	8 635 61B
2xRJ45 CAT6 FTP	8 631 62B	8 633 62B	8 634 62B	8 635 62B
2xRJ45 CAT6 UTP	8 631 64B, 8 649 43B	8 633 64B	8 634 64B	8 635 64B
RJ45 CAT6 STP	8 631 65B	8 633 65B	8 634 65B	8 635 65B
2xRJ45 CAT6 STP	8 631 66B	8 633 66B	8 634 66B	8 635 66B
RJ45 CAT6A UTP	8 631 67B	8 633 67B	8 634 67B	8 635 67B
2xRJ45 CAT6A UTP	8 631 68B	8 633 68B	8 634 68B	8 635 68B
RJ45 CAT6A STP	8 631 69B	8 633 69B	8 634 69B	8 635 69B
2xRJ45 CAT6A STP	8 631 70B	8 633 70B	8 634 70B	8 635 70B

Niloé™ STEP
RJ45 socket, Double RJ45 socket

Cat. No(s): 3 981 59B/60B - 3 982 12B/56B/57B/58B - 3 984 59B/60B - 3 985 59B/60B - 8 631 57B/58B/59B/60B/61B/62B/63B/64B/65B/66B/67B/68B/69B/70B - 8 633 57B/58B/59B/60B/61B/62B/63B/64B/65B/66B/67B/68B/69B/70B - 8 634 57B/58B/59B/60B/61B/62B/63B/64B/65B/66B/67B/68B/69B/70B - 8 635 57B/58B/59B/60B/61B/62B/63B/64B/65B/66B/67B/68B/69B/70B - 8 649 42B/43B

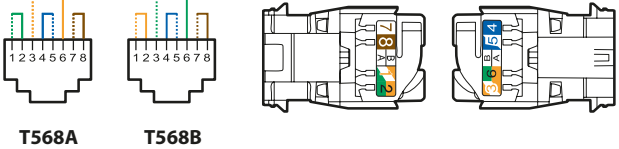
3. DIMENSIONS (mm)



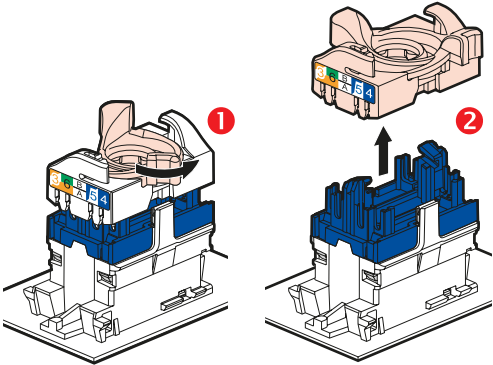
References	A	B	C	D
3 982 12B	86	86	24.5	11
3 981 59B, 3 984 59B, 3 985 59B, 3 982 56B/57B/58B, 8 63X 57B/59B/ 61B/63B/65B/67B/69B 8 649 42B	75.8	75.8	24.5	11
3 981 60B, 3 984 60B, 3 985 60B, 8 63X 58B/60/62B/ 64B/66B/68B/70B, 8 649 43B	75.8	75.8	30	11.3

4. CONNECTION

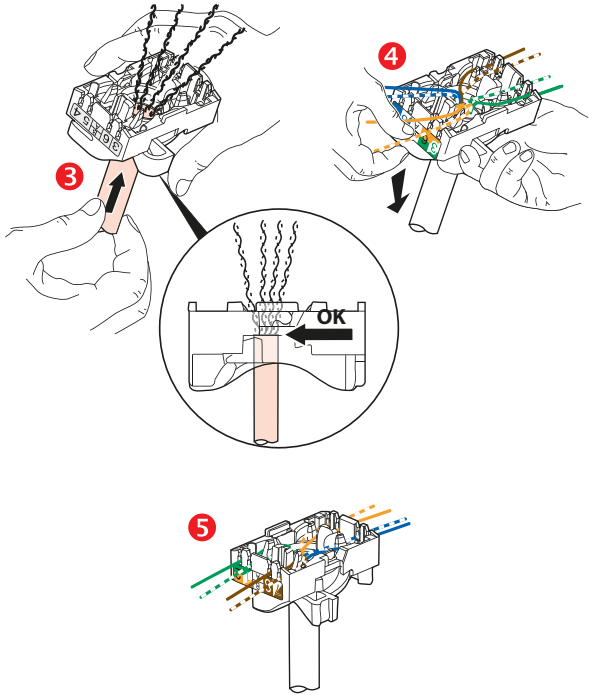
Accepts the following cable connectors:
RJ 11 (4 contacts), RJ 12 (6 contacts), RJ 45 (9 contacts).
Double colour code T568A and T568B on terminals:
UTP 8 contacts
FTP 9 contacts
STP 9 contacts 360° screen



Conductors supported:
- Single core/Multicore: 0.4 to 0.65 mm, AWG 26 to 22
- Polyethylene conductor insulation: Ø on insulation 0.85 to 1.7 mm
RJ45 connectors are equipped with a locking nut. They do not require a special tool and can be re-wired if a mistake is made.



This system makes it easy to spread pairs before fitting them onto the connector.



5. TECHNICAL CHARACTERISTICS

■ 5.1 Mechanical characteristics
Protection against impacts: IK 03
Protection against solid/bodies and liquids: IP 20
Maximum number of connections and disconnections: 5 without replacing the wire.
Endurance: 2500 operations (plugging in/unplugging).

■ 5.2 Material characteristics
Mat appearance
Material: - Cover and plate: ABS
- Base (simple RJ45) : PC
- Base (double RJ45) : PC grey RAL 7016 + 10 % glass fiber
- Halogen-free
- UV resistant

Self-extinguishing:
850°C/30 s for installing components holding live parts in place
650°C/30 s for other insulating components

■ 5.3 ELECTRICAL CHARACTERISTICS
Breakdown voltage 1000 VDC
Contact resistance 20 mΩ
Insulation resistance 500 mΩ at 100 VDC
Tested and independently certified to comply with IEC 60512-99-001 and IEC 60512-99-002 for PoE support up to 90 W (Type 4).

■ 5.4 Climate characteristics
Storage temperature: -10°C to +70°C
Usage temperature: -5°C to +40°C

6. MAINTENANCE

Surface cleaning with a cloth.

Do not use:
Acetone, tar remover, trichloroethylene.

Maintenance with the following products:
Hexane, Methylated spirit, Soapy water, Diluted ammonia, Bleach diluted to 10%, Window-cleaning products.

Caution: Always test before using other special cleaning products.

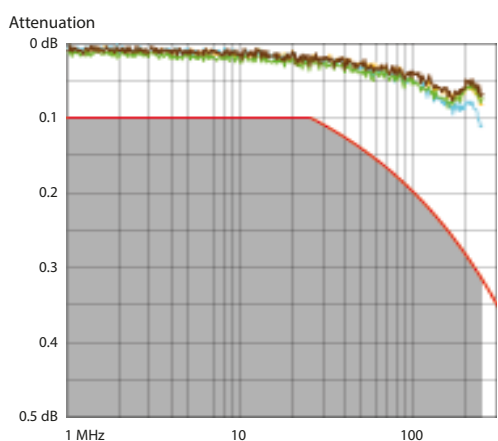
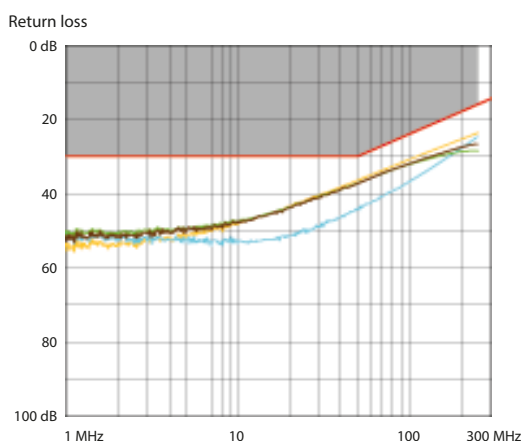
7. STANDARDS AND APPROVALS

Compliance with standards of installation and manufacturing.

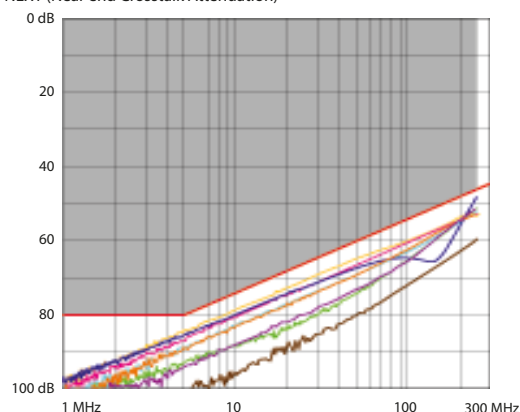
Refer to e. catalogue.

The undersigned, LEGRAND, declares that the radio-electric equipment type (Cat. Nos 3 981 59B - 3 981 60B - 3 982 12B - 3 982 56B - 3 982 57B - 3 982 58B - 3 984 59B - 3 984 60B - 3 985 59B - 3 985 60B - 8 631 57B - 8 631 58B - 8 631 59B - 8 631 60B - 8 631 61B - 8 631 62B - 8 631 63B - 8 631 64B - 8 631 65B - 8 631 66B - 8 631 67B - 8 631 68B - 8 631 69B - 8 631 70B - 8 633 57B - 8 633 58B - 8 633 59B - 8 633 60B - 8 633 61B - 8 633 62B - 8 633 63B - 8 633 64B - 8 633 65B - 8 633 66B - 8 633 67B - 8 633 68B - 8 633 69B - 8 633 70B - 8 634 57B - 8 634 58B - 8 634 59B - 8 634 60B - 8 634 61B - 8 634 62B - 8 634 63B - 8 634 64B - 8 634 65B - 8 634 66B - 8 634 67B - 8 634 68B - 8 634 69B - 8 634 70B - 8 635 57B - 8 635 58B - 8 635 59B - 8 635 60B - 8 635 61B - 8 635 62B - 8 635 63B - 8 635 64B - 8 635 65B - 8 635 66B - 8 635 67B - 8 635 68B - 8 635 69B - 8 635 70B - 8 649 42B - 8 649 43B) complies with directive 2014/53/EU. The full text of the EU declaration of conformity is available on the following website: www.legrand.com/ecatalogue

■ 7.1 Performance of components (RJ 45 connectors)



NEXT (Near end Crosstalk Attenuation)



FEXT (Far end Crosstalk Attenuation)

